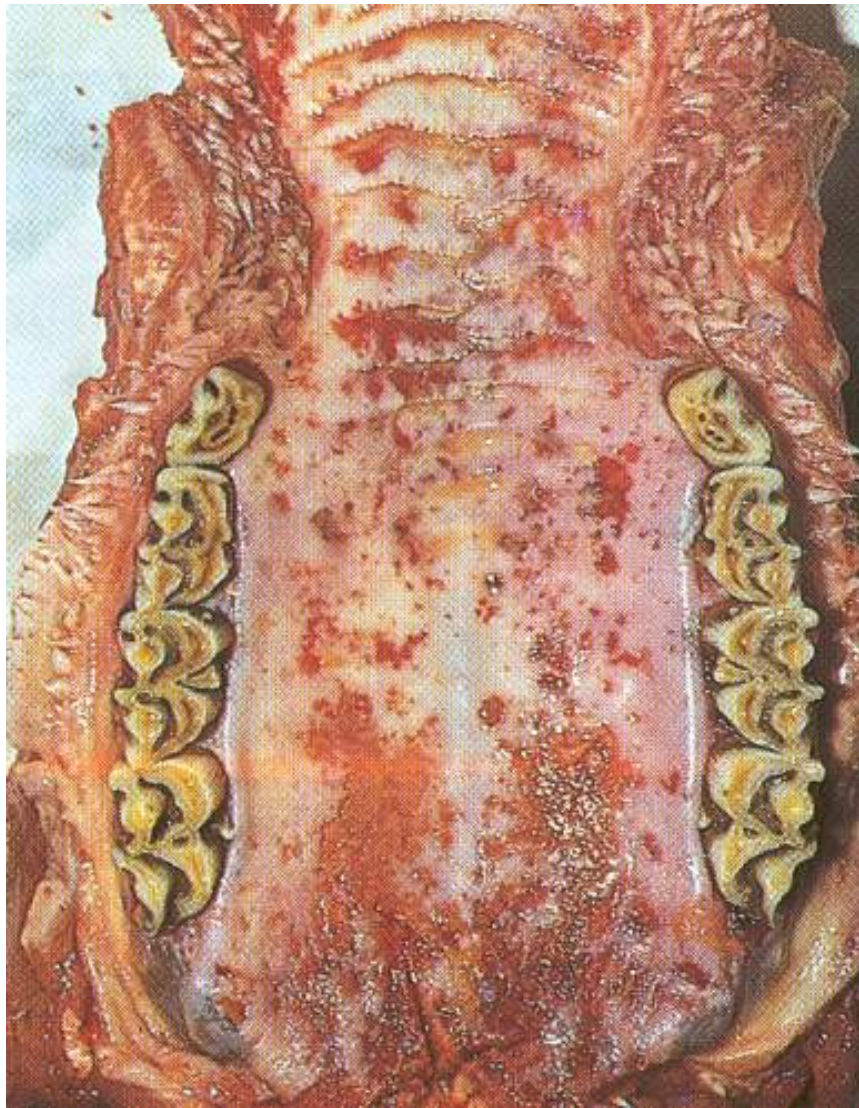




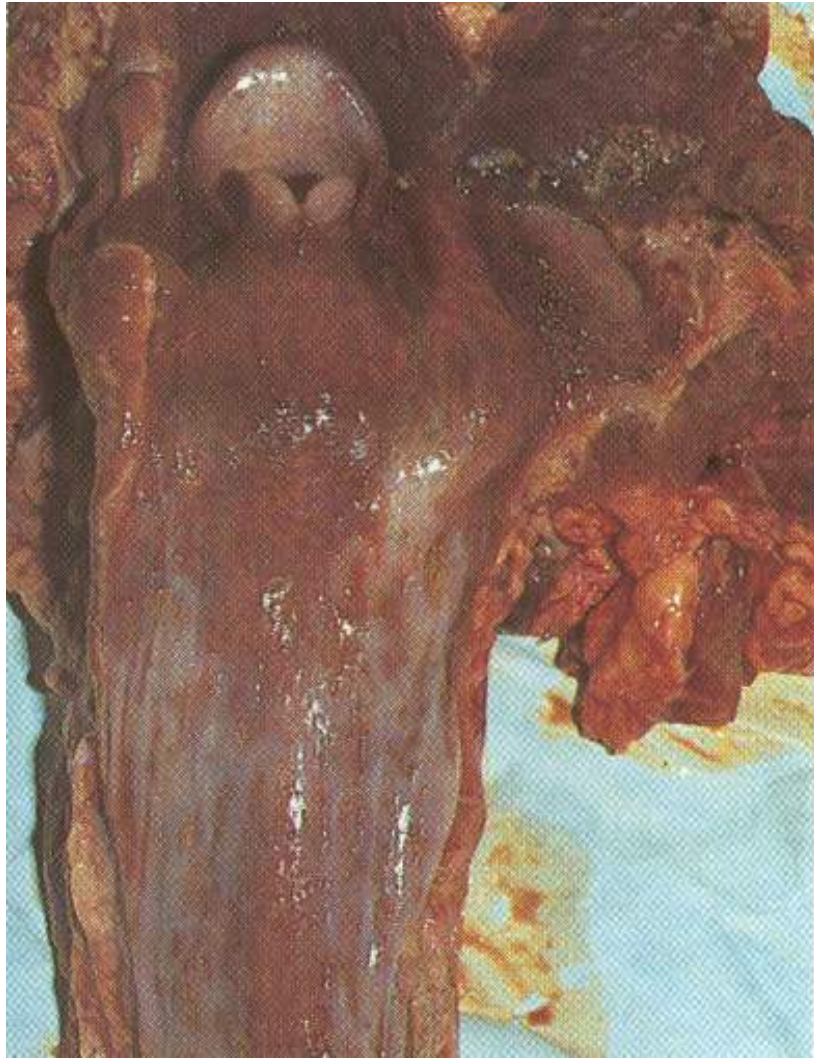
Early erosions of the gums and lips .



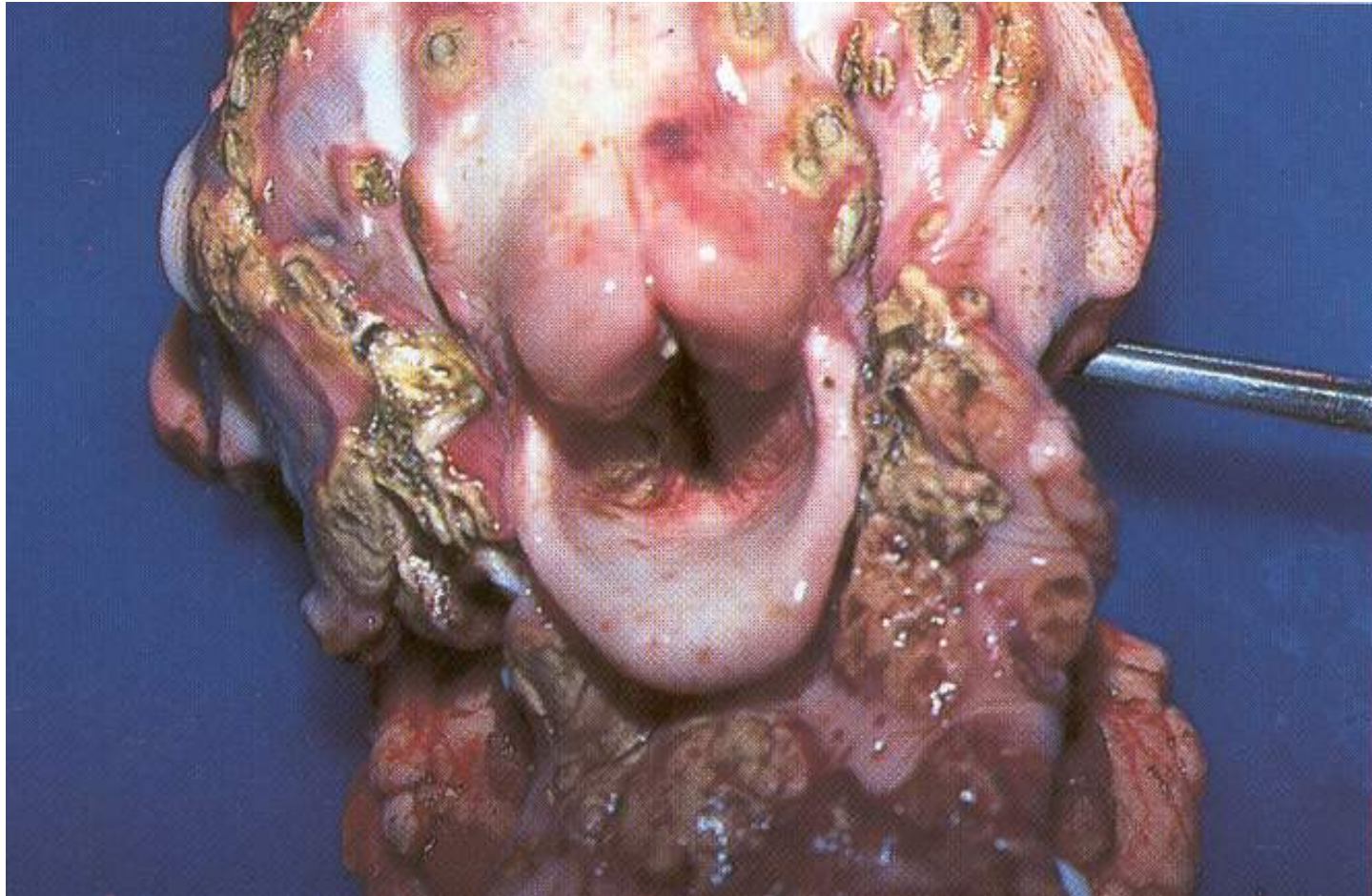
MD. Erosions over the entire hard palate.



MD. Erosions and circular lesions suggestive of a secondary infection.



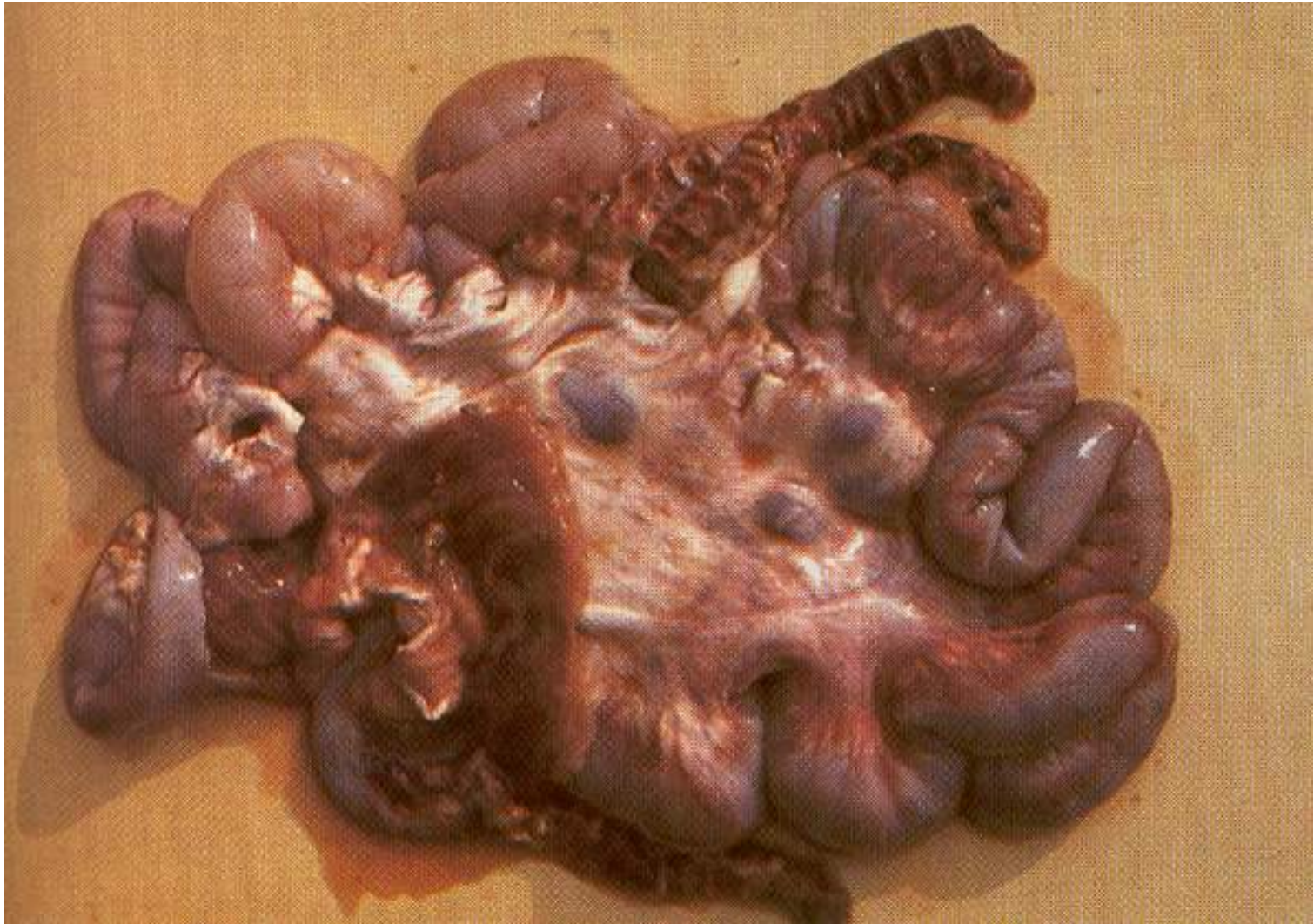
MD. Rima glottis and caudal pharynx



MD. Necrosis and abscessation surround the epiglottis.



MD.Erosions and oedematous edges of the abomasal rugae.



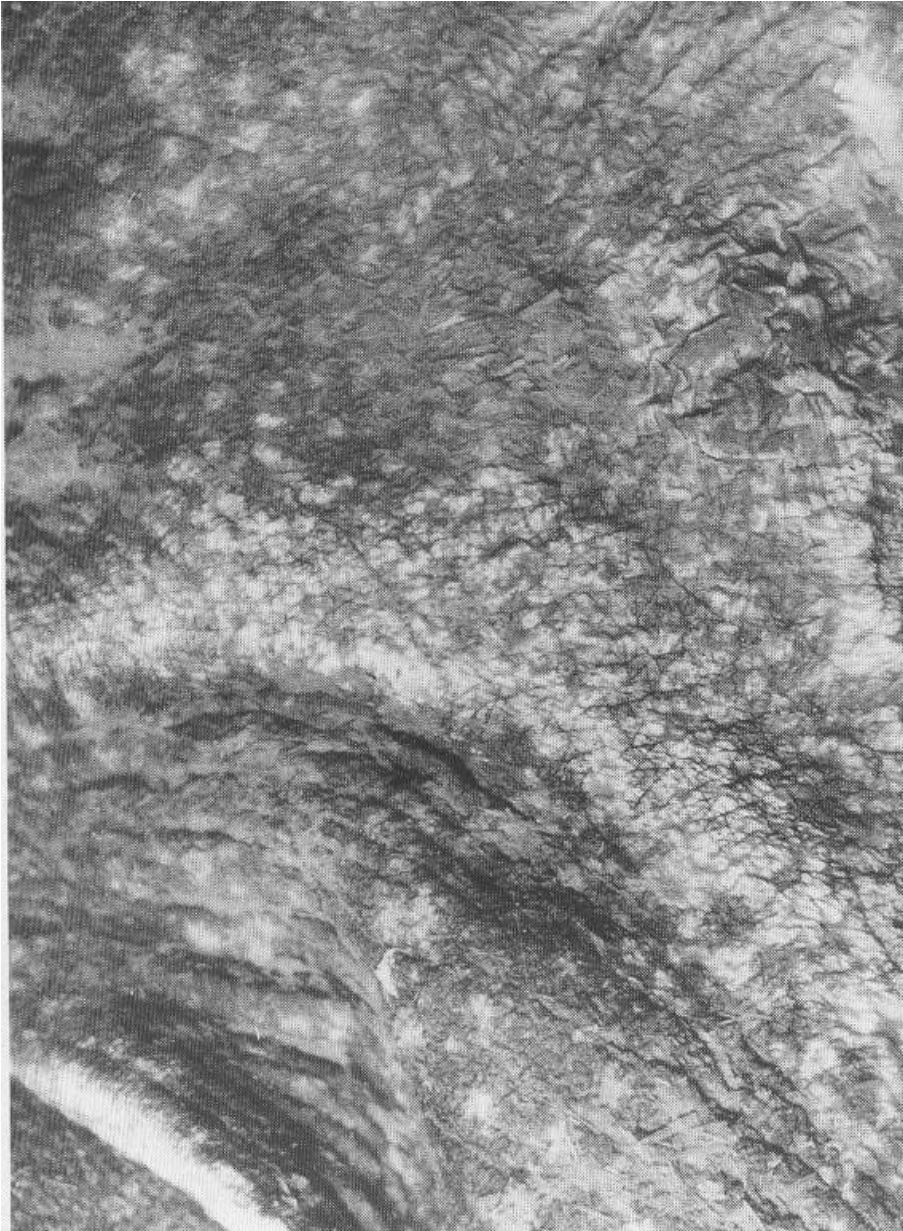
MD. Small intestinal lesions



MD. Two cattle are both 18 months old. The nearer heifer, with an abnormal, rust coloured coat, is stunted as a chronic infection

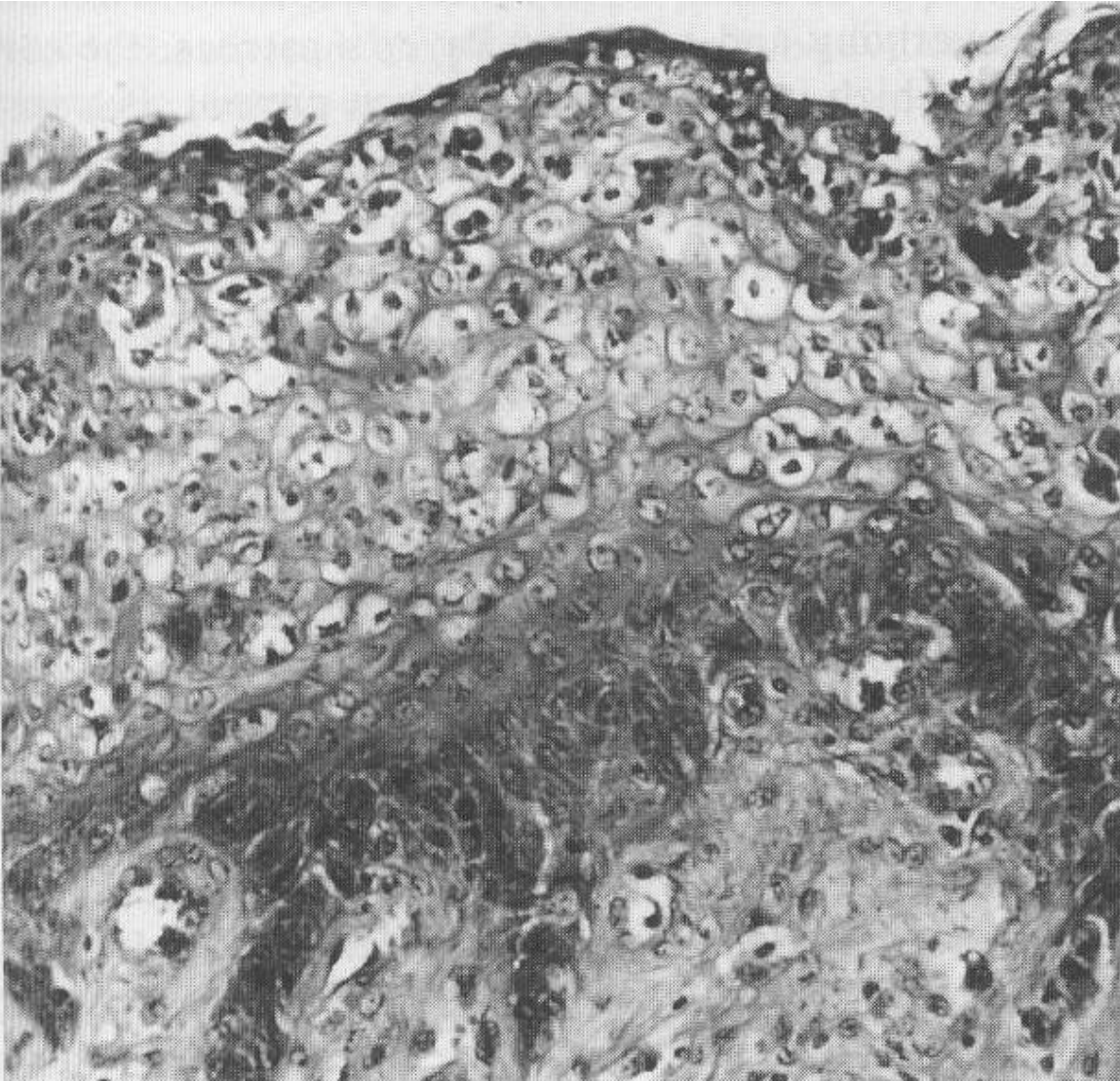


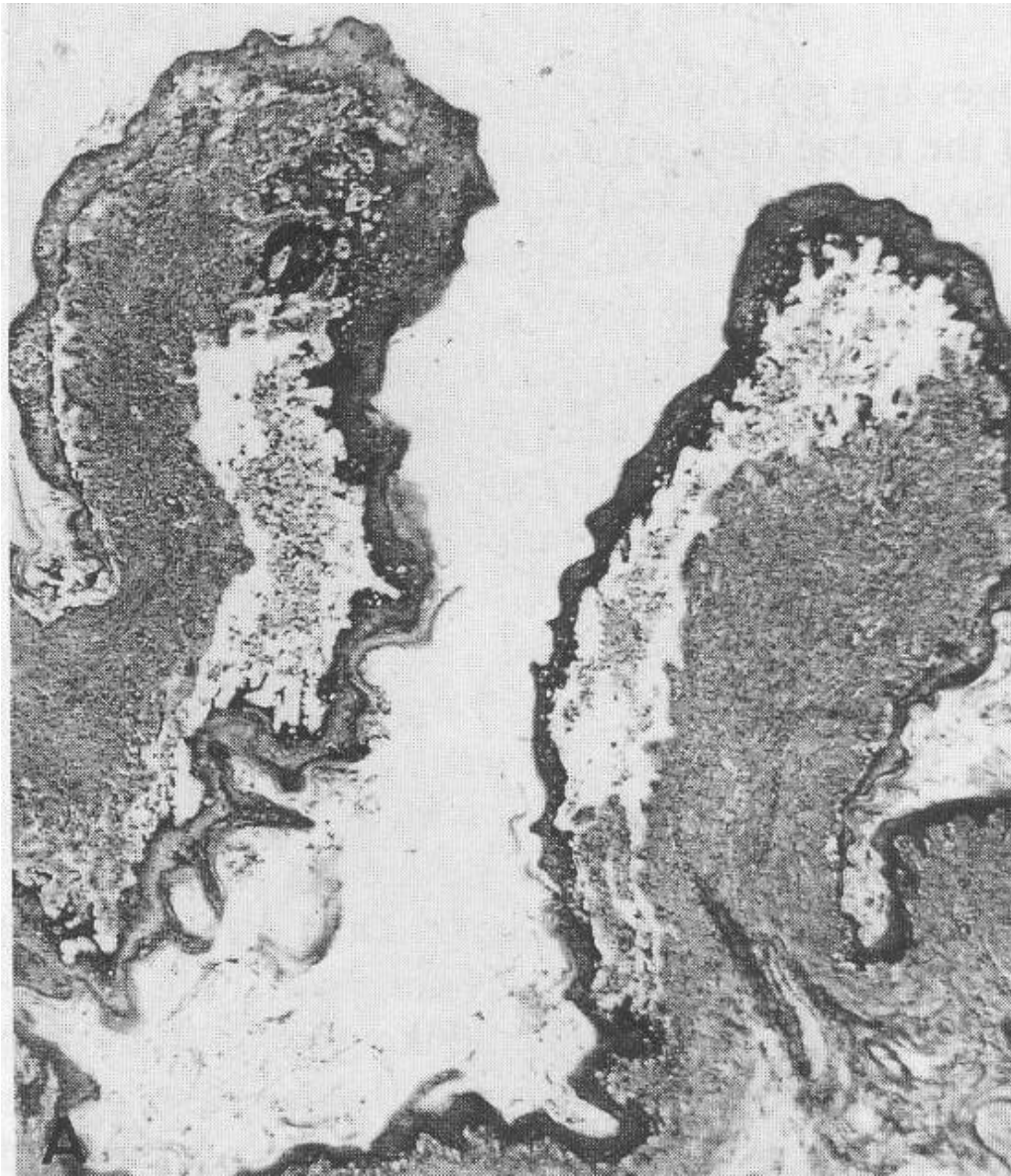
MD.Source of infection



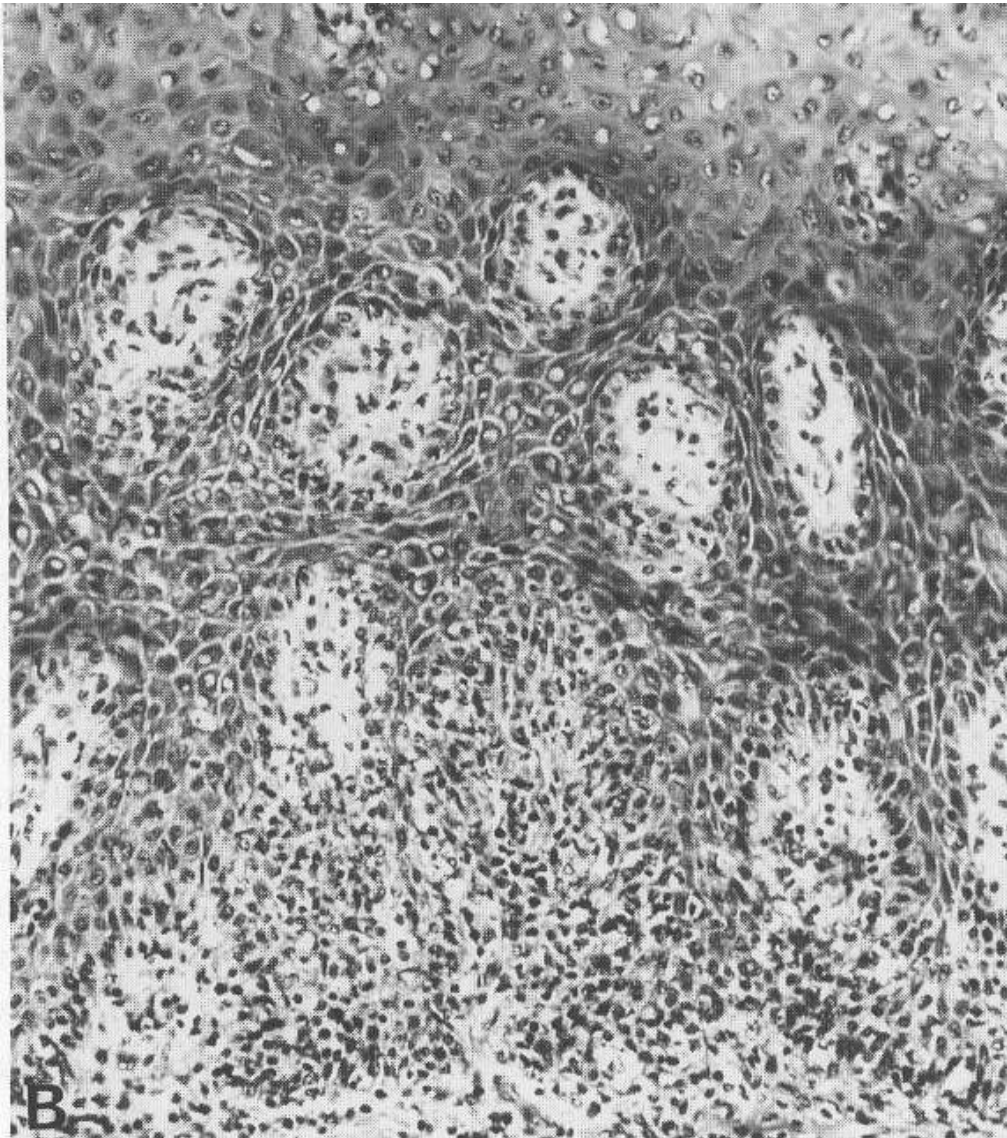
MD. Focal and confluent often preulcerative, plaquelike lesions on mucosa of dorsal sac of rumen.

MD. Early
esophageal lesion.

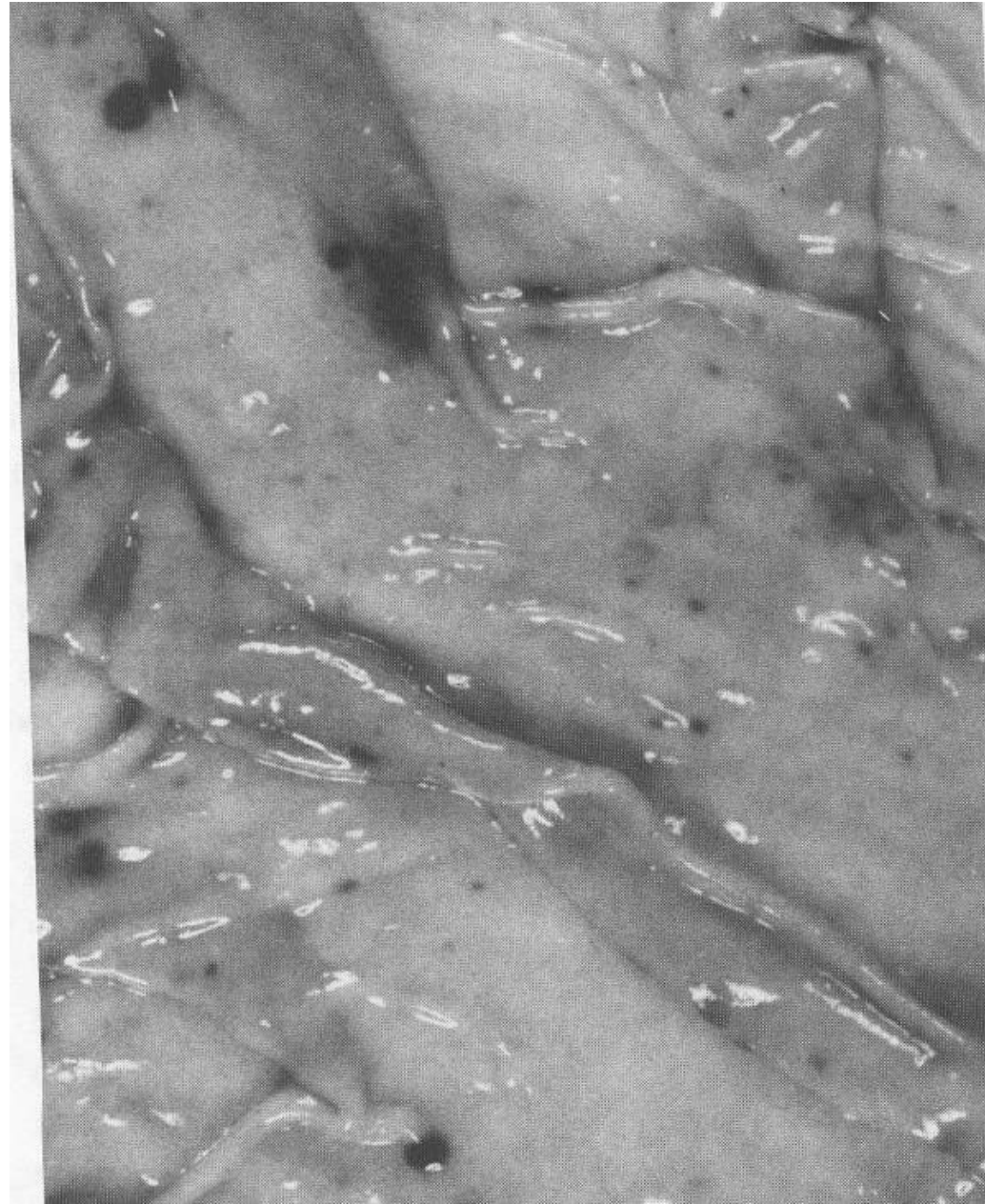




MD. Cleavage vesicles
in rumen papillae.



MD. Edema of proprial papillae. Acute focal inflammation of papilla and propria. There is necrosis of scattered cells deep in the epithelium.

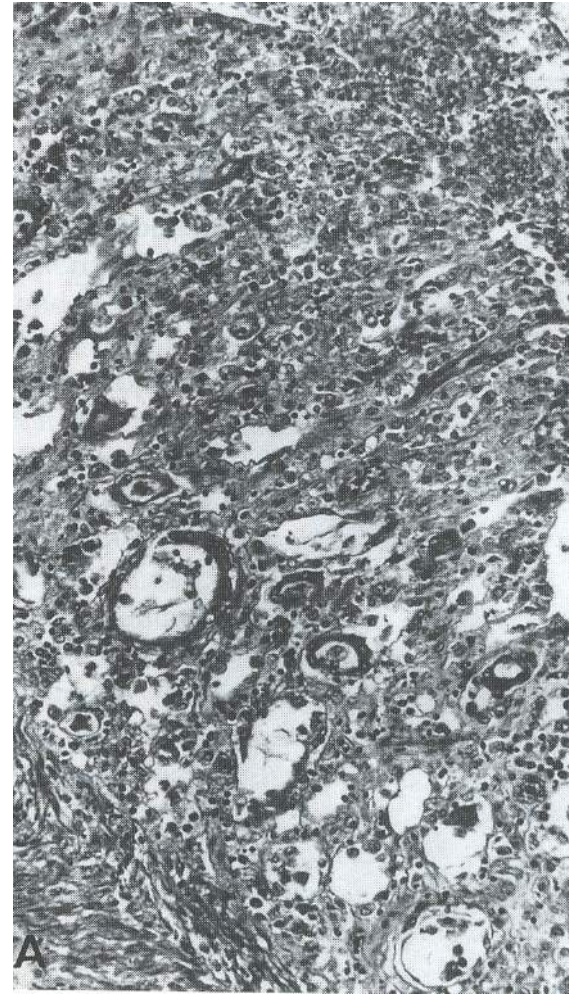


MD. Hemorrhage and
ulceration in the
abomasum.



MD. Fibrinohemorrhagic exudate over peyer patch in the ileum(left). Deep red peyer's patch visible through serosa of small intestine.

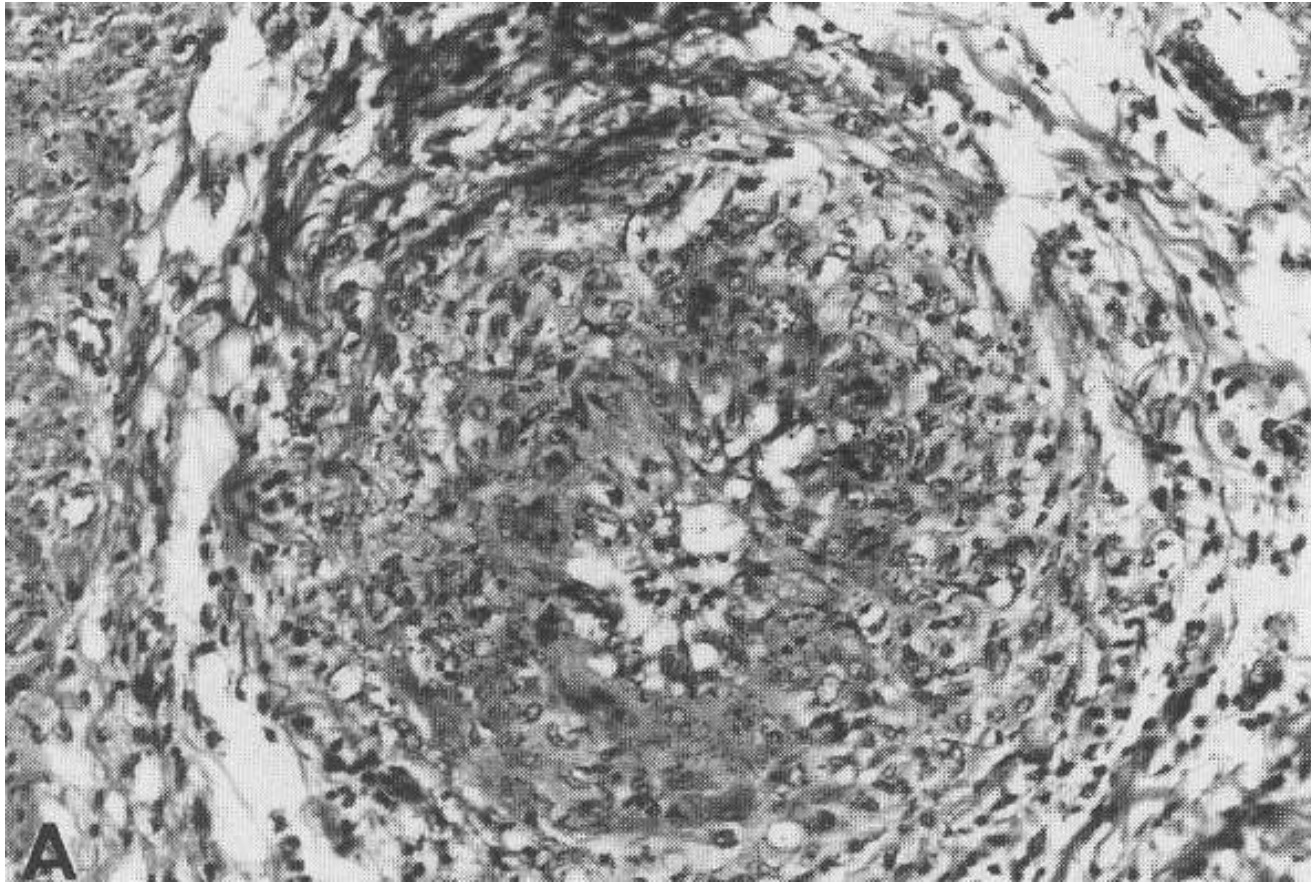
MD.
Fibrinohemorrhagic
colitis



MD. Dilated and denuded
glands, collaps of lamina
propria and pseudomembrane
formation in colon

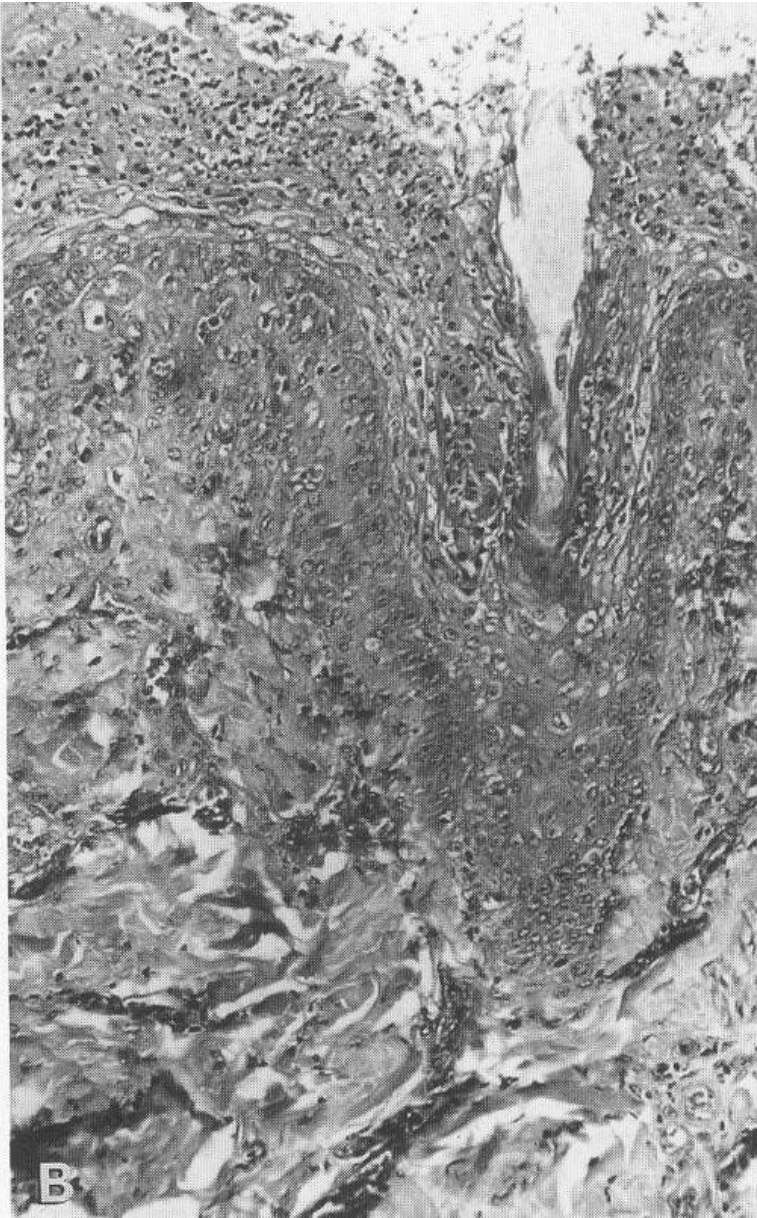


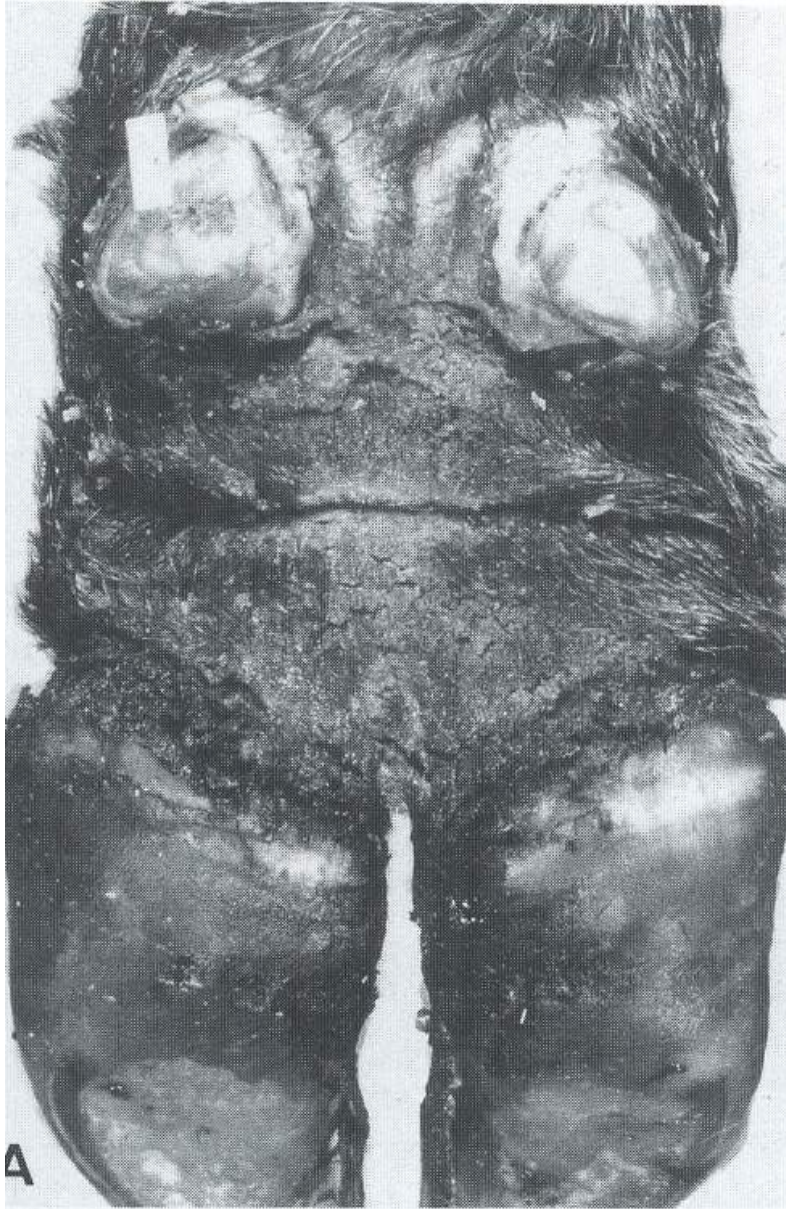
MD. Herniation of cripts of lieberkühn into the submucosa replacing necrotic lymphoid follicle. Hyperplasia, stratum germinativum.



MD. Fibrinoid necrosis and mild periarteritis of a mesenteric arteriole. colon

MD. Skin. Superficial epidermal necrosis extending into hair follicle. Hyperplasia, stratum germinativum.

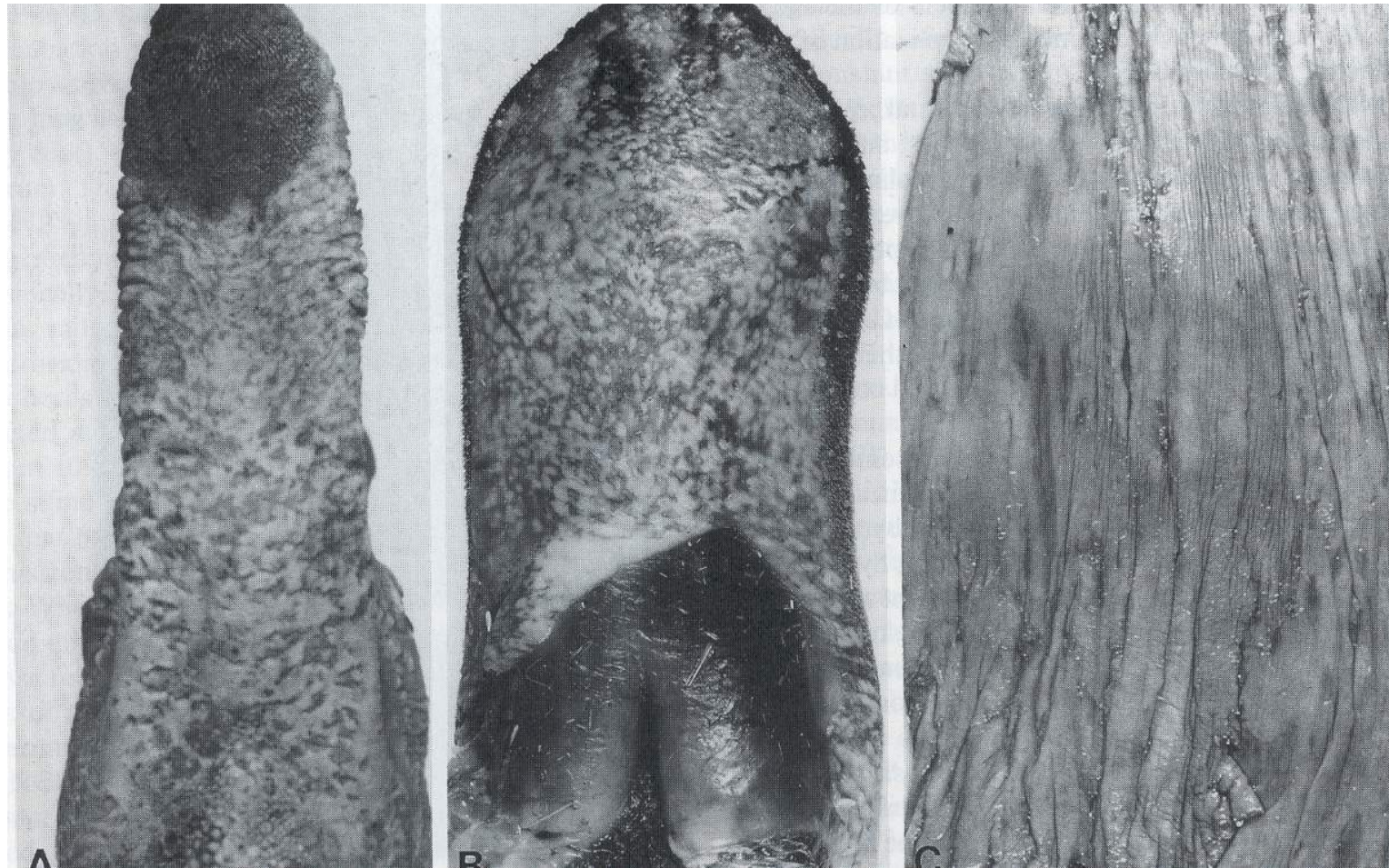




MD. Coronitis and erosive-ulcerative dermatitis of pastern.



MD. Blunting of papillae
On the buccal mucosa due
to necrosis induced by
virus infection. A few
remainin normal papillae
are long with sharp points.



MD. Dorsal surface of the tongue showing multiple confluent ulcers.
Elevated surface of the tongue showing multiple confluent ulcers.
Longitudinal erosions and ulcers on the esophagus.